



Hard Chess Puzzle # 0126

By

G Bud Games
<https://gbud.in>

February 4, 2022

Contents

Hard Chess puzzle # 0126 - Mate in 4 moves	4
Hard chess puzzle 0126	4
Solution to hard chess puzzle 0126	5
Solution 1	5
Right moves for the solution to the hard chess puzzle 0126	9
Explanation for the moves	9
Categories of hard chess puzzle 0126	10
hard chess puzzle 0126 chart	10
How to view the solution to hard chess puzzle 0126	12
How to get help for moves in the hard chess puzzle 0126	13
Play chess for free	14

List of Figures

1	Solve this hard chess puzzle 0126. Mate in 4 moves @ https://gbud.in/gcgqsg3	4
2	Solve this hard chess puzzle online with solution @ https://gbud.in/gcgqsg3	4
3	Initial board position of hard chess puzzle 0126	5
4	Qe5+	6
5	Kf8	6
6	Ra8+	7
7	Be8	7
8	Rxe8+	8
9	Kf7	8
10	Qe7#	9
11	hard chess puzzle 126 chart 1	10
12	hard chess puzzle 126 chart 2	11
13	hard chess puzzle 126 chart 3	11
14	hard chess puzzle 126 chart 4	12
15	Click the solution button to view solutions @ https://gbud.in/gcgqsg3	12
16	Click the help button to get help on next move @ https://gbud.in/gcgqsg3	13
17	Solve more hard puzzles @ https://gbud.in/chshdpz	13
18	Solve other puzzles @ https://gbud.in/chsgppz	13
19	Play chess online for free. Solve puzzles and play with friends	14

20 Solve this puzzle online by scanning this QR code or go to
the link below 15

Hard Chess puzzle # 0126 - Mate in 4 moves

Solve this hard chess puzzle and improve your chess games through improvement of your chess strategies and chess tactics. This hard puzzle is a subset of [kids games](#).

Puzzle No : 0126

Difficulty level : hard

Description : Mate in 4 moves

Next Move : White

Player level : Advanced

Short URL for puzzle : <https://gbud.in/gcgqsg3>

Hard chess puzzle 0126

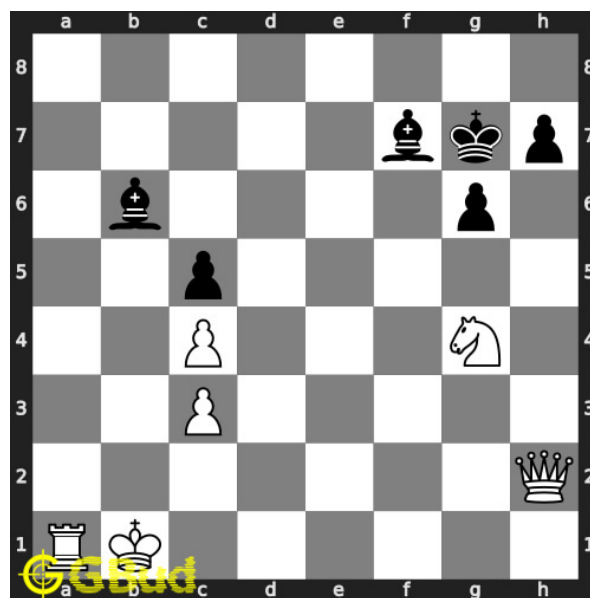


Figure 1: Solve this hard chess puzzle 0126. Mate in 4 moves @ <https://gbud.in/gcgqsg3>



Figure 2: Solve this hard chess puzzle online with solution @ <https://gbud.in/gcgqsg3>

Dont forget to check out [chess puzzles](#), [easy chess puzzles](#), [medium chess puzzles](#), [hard chess puzzles](#) and [chess puzzles collections](#) .

Solution to hard chess puzzle 0126

At this puzzle, next [move](#) is by [White](#). The objective of the puzzle is to mate in 4 moves.

See the interactive solution at the [puzzle page](#)

Solution 1

Initial board position This is the initial board position of hard chess puzzle 0126.

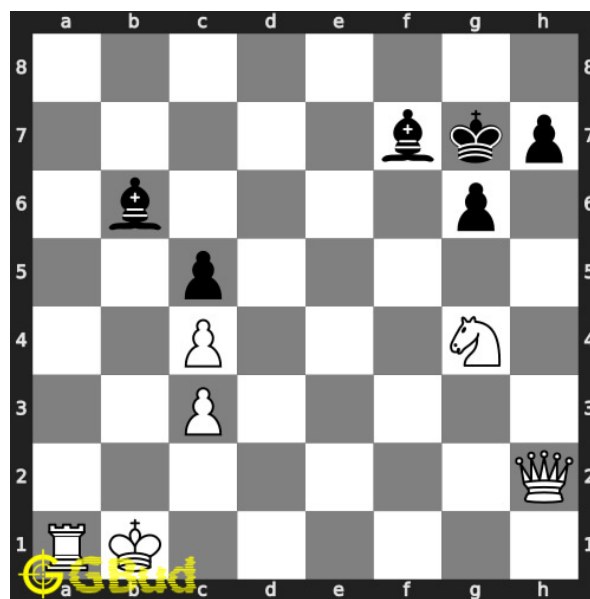


Figure 3: Initial board position of hard chess puzzle 0126

Move 1 Move by white

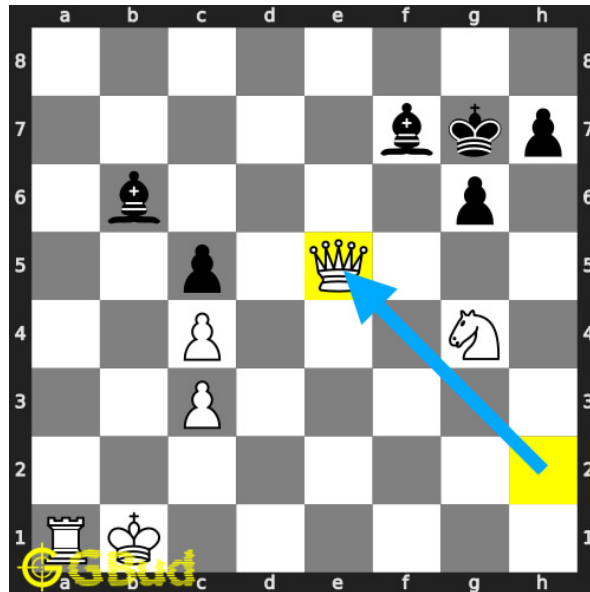


Figure 4: Qe5+

your **queen moves** to e5 and gives **check** to opponent. this is to force the opponent's **king** to **move** to eighth **rank**.

Move 2 Move by black

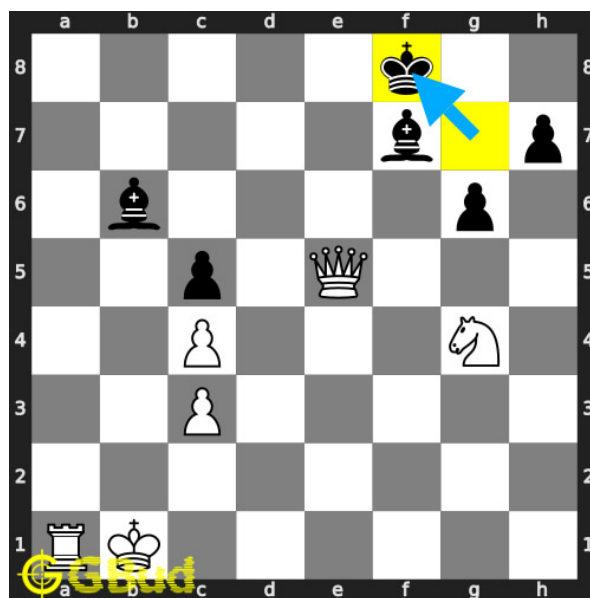


Figure 5: Kf8

opponent's **king moves** to f8.

Move 3 Move by white

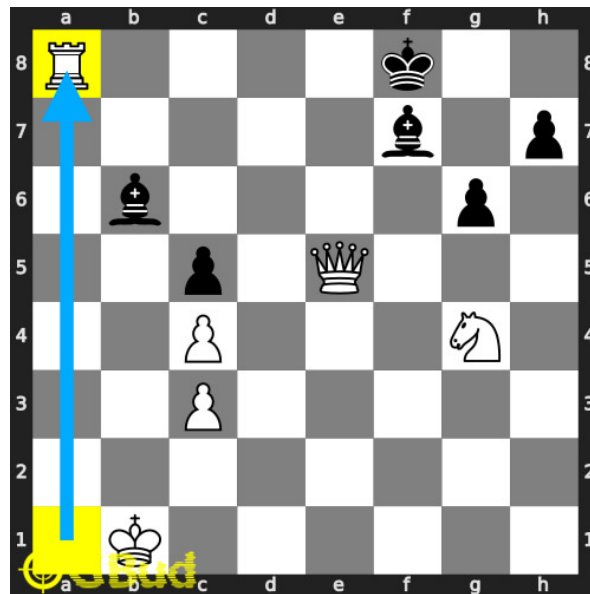


Figure 6: Ra8+

your **rook moves** to **a8** and gives **check** to opponent.

Move 4 Move by black

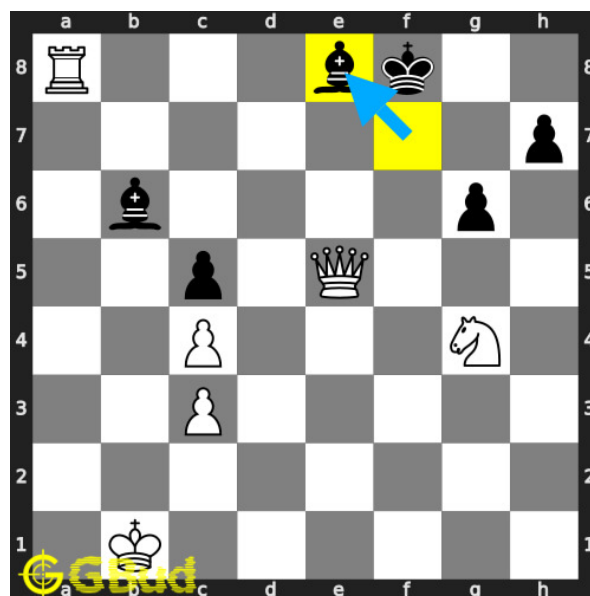


Figure 7: Be8

opponent's **bishop** blocks the **check**.

Move 5 Move by white

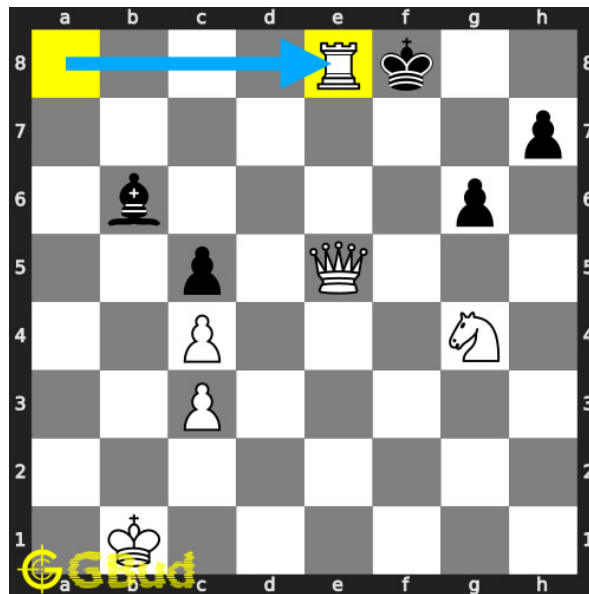


Figure 8: Rxe8+

your **rook captures** opponent's **bishop** and gives **check** to opponent.

Move 6 Move by black

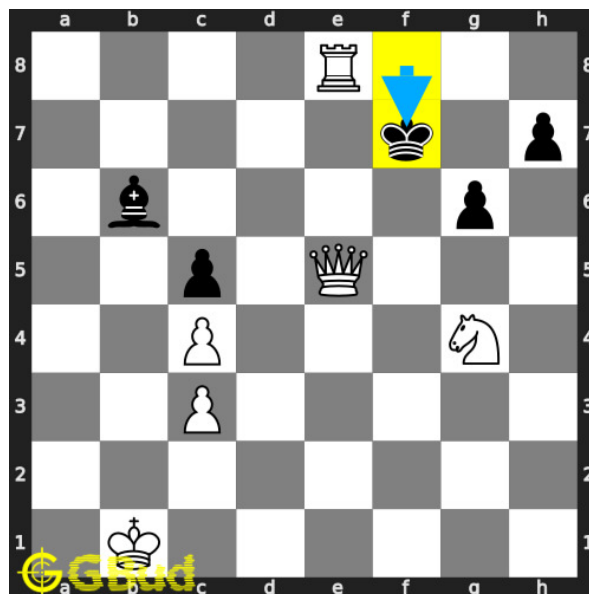


Figure 9: Kf7

opponent's **king moves** to **f7** as this is the only legal **move** available. it can't **capture** your **rook** since it is in **battery** formation with the **queen**.

Move 7 Move by white

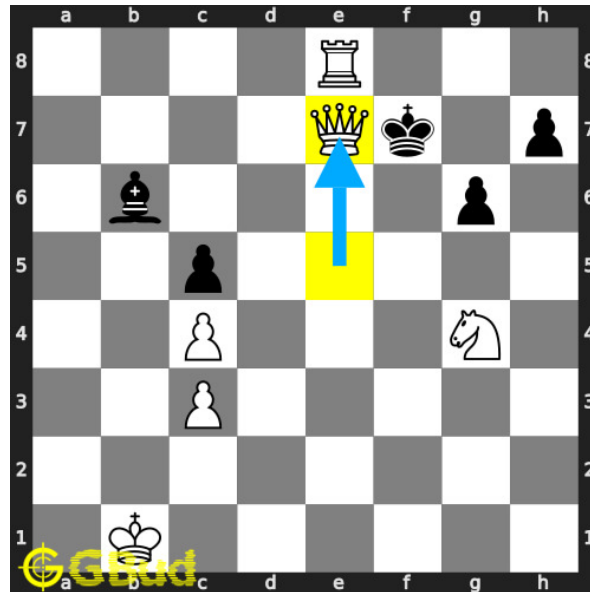


Figure 10: Qe7#

your **queen moves** to **e7** and **checkmate**. this is similar to ladder **mate** or lawn mover **mate**. this is how you can **mate** in 4 **moves**.

Right moves for the solution to the hard chess puzzle 0126

Based on the objective of the puzzle, you have to make the right moves. Following are the right moves

1. Qe5+, Ra8+, Rxe8+, Qe7#

Explanation for the moves

1. Qe5+ - Your queen moves to e5 and gives check to opponent. This is to force the opponent's king to move to eighth rank.
2. Kf8 - Opponent's king moves to f8.
3. Ra8+ - Your rook moves to a8 and gives check to opponent.
4. Be8 - Opponent's bishop blocks the check.
5. Rxe8+ - Your rook captures opponent's bishop and gives check to opponent.
6. Kf7 - Opponent's king moves to f7 as this is the only legal move available. It can't capture your rook since it is in battery formation with the queen.
7. Qe7# - Your queen moves to e7 and checkmate. This is similar to ladder mate or lawn mover mate. This is how you can mate in 4 moves.

8. For right move - You have used your queen and rook effectively. It was a good decision
9. For wrong move - You could have had lawn mover mate. Try to move the queen and rook.

Categories of hard chess puzzle 0126

This hard chess puzzle falls in these categories.

1. [Hard chess puzzles](#)
2. [Endgame puzzles in chess](#)
3. [Strategy puzzles in chess](#)
4. [Mate pattern puzzles in chess](#)
5. [Mate in 4 puzzles in chess](#)
6. [Rook puzzles in chess](#)
7. [Queen puzzles in chess](#)

hard chess puzzle 0126 chart



Figure 11: hard chess puzzle 126 chart 1



Figure 12: hard chess puzzle 126 chart 2



Figure 13: hard chess puzzle 126 chart 3

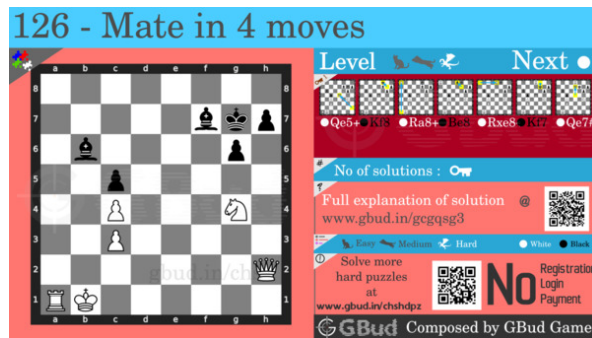


Figure 14: hard chess puzzle 126 chart 4

How to view the solution to hard chess puzzle 0126

To view the [solution to this puzzle](#), follow the steps given below

1. Go to the [puzzle page](#)
2. Click the solution button (Key as shown [below](#)) to view the solution



Figure 15: Click the solution button to view solutions @ <https://gbud.in/gcgqsg3>

How to get help for moves in the hard chess puzzle 0126

To get help or the possible next moves in the puzzle, , follow the steps given below

1. Go to the [puzzle page](#)
2. Click the help button (exclamation mark as shown [below](#)) to get help or suggestion on next possible [move](#)



Figure 16: Click the help button to get help on next move @ <https://gbud.in/gcgqsg3>



Figure 17: Solve more hard puzzles @ <https://gbud.in/chshdpz>



Figure 18: Solve other puzzles @ <https://gbud.in/chsgppz>

Play chess for free

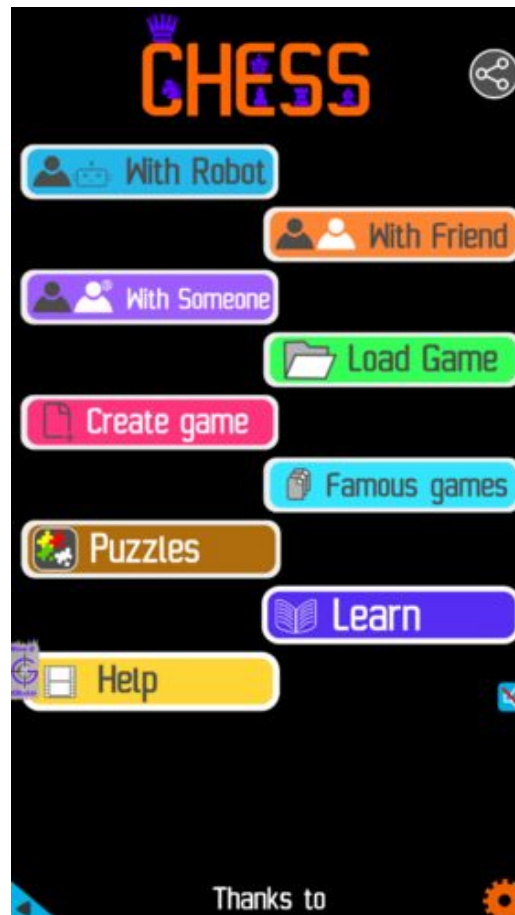


Figure 19: Play chess online for free. Solve puzzles and play with friends

Play chess for free at <https://gbud.in/chs>

We present you a platform to play chess online with friends for free. No need to install any app. You can play chess for free without registration or login.

Simple. You can do several chess related activities.

1. solve chess puzzles
2. learn about chess
3. play chess with computer
4. play chess with friend
5. create your own chess games

6. [fen viewer](#)
7. [fen editor](#)
8. [fen generator](#)
9. [pgn viewer](#)
10. [chess board editor](#)
11. [view famous chess games.](#)



Figure 20: Solve this puzzle online by scanning this QR code or go to the link below

<https://gbud.in/gcgqsg3>

Read the latest article on Hard Chess puzzle # 0126 - Mate in 4 moves by scanning this QR code or click the link

Previous article : « [Hard Chess puzzle # 0125 - Mate in 3 moves](#)

Next article : [Hard Chess puzzle # 0127 - Mate in 2 moves](#) »

[Back to top](#)

[Contact Us](#)